



**REDUCE
CONGESTION**



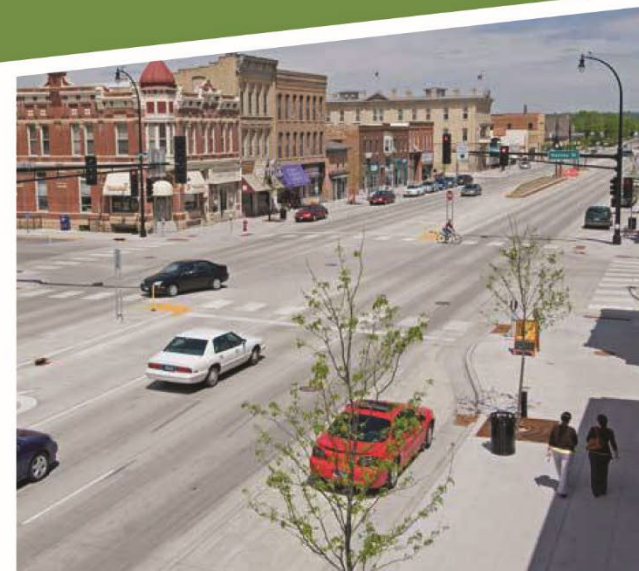
**MAXIMIZE ECONOMIC
DEVELOPMENT**



**ENHANCE
SAFETY**

Welcome

A nonpartisan public/private joint powers organization made up of County, City, Township, Non-Profit and Business Leaders along U.S. 169 from Mankato to the Twin Cities





BACKGROUND



U.S. HWY 169: BY THE NUMBERS

U.S. Hwy 169 plays a key role in moving people and goods in south-central and southwestern Minnesota.

U.S. Hwy 169 supports

- Businesses
- Higher education
- Freight
- Agriculture
- Energy
- Commuters



30K Tons of freight shipped per day.



40% Of MN employment within 10 miles.



22% of traffic is truck traffic.



200% Growth in agribusiness freight expected by 2025.



~50% Of all corn, soybeans, & ethanol shipped.



50% Of all MN ethanol output transported.



60% Of MN Fortune 500 businesses supported.



1M Employees served.



~45K Students & faculty served.



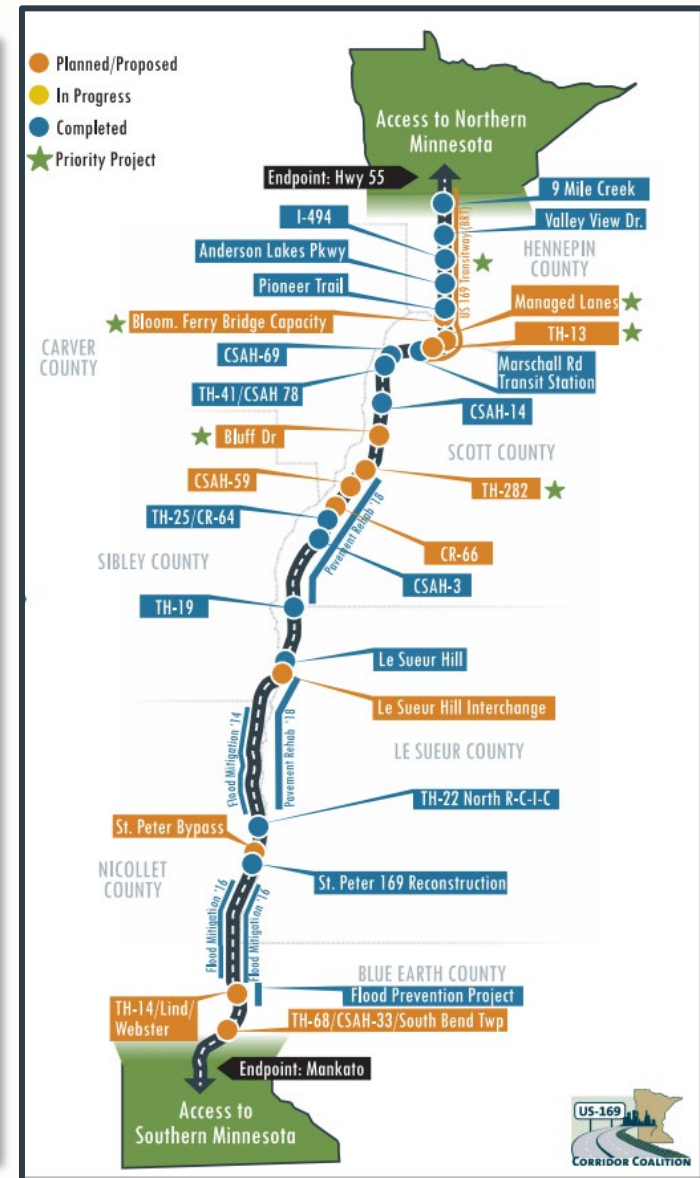
Also features a key connection to the Ports of Savage.

Access to Southern Minnesota



2021 LEGISLATIVE PRIORITIES

- **Jordan Area Freight & Mobility Project**
 - U.S. 169/ TH 282/ CR 9 Interchange
 - Sand Creek Township Improvements
- **Bloomington Ferry Bridge**
 - Increase Capacity to Improve Mobility and Reduce Congestion
- **Ports of Savage**
 - TH 13 and Dakota Avenue Freight Access & Mobility Project
 - Advocate for the Freeway Conversion of TH 13 to Improve Freight & Mobility
- **U.S. 169 Mobility Study**
 - Implementation





JORDAN AREA FREIGHT & MOBILITY PROJECT

Sand Creek Township Overpass & Bluff Drive Frontage Road

U.S. 169/ TH 282/ CH 9 Interchange in Jordan, MN

Project Benefits

Safety

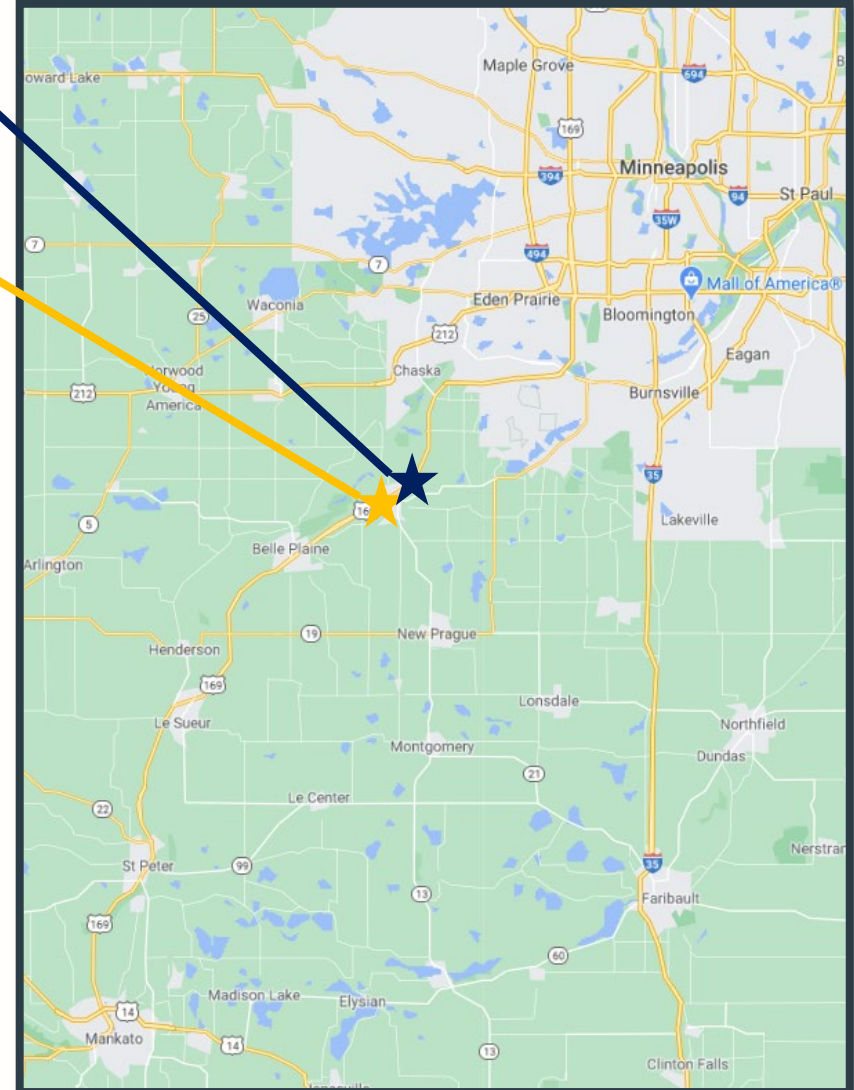
- Elimination of 221 Conflict Points
- Crash Rate Reduction

Mobility

- Removal of Last Signal on U.S. 169 between Mankato and U.S. 694 (75 miles)

Freight

- Increased Mobility and Efficiency
- Carbon Footprint Reduction





JORDAN AREA FREIGHT & MOBILITY PROJECT

U.S. 169/ TH 282/ CR 9 Intersection Improvements





JORDAN AREA FREIGHT & MOBILITY PROJECT

Sand Creek Township Improvements

Project Elements:

- Graded speared overpass of U.S. 169, south of Bluff Drive
- Extended right turn lanes off U.S. 169
- Northbound and Southbound Acceleration Lanes
- Completed Gaps in the Frontage Road System on Berkshire, Valley View, and Jordan Ave
- Closure of 173rd and 166th Accesses





BLOOMINGTON FERRY BRIDGE

Bloomington Ferry Bridge Shakopee, MN

Project Benefits

Congestion

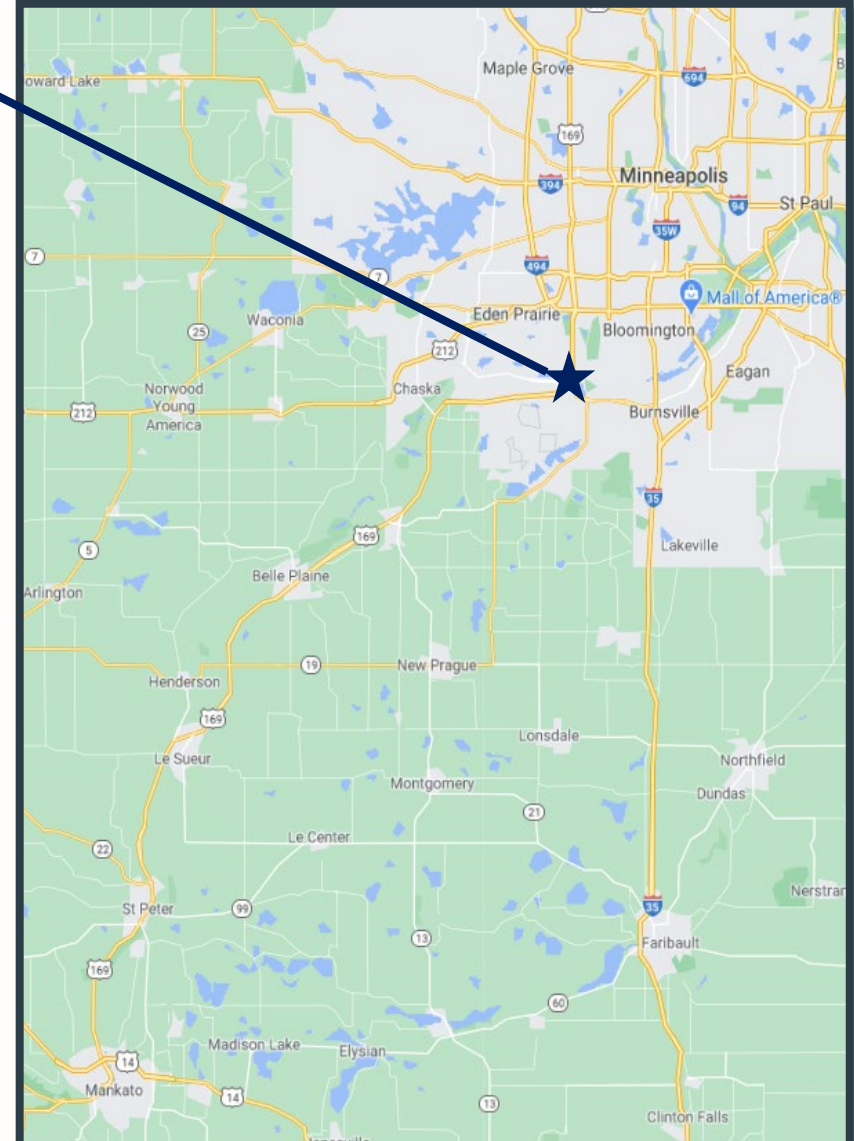
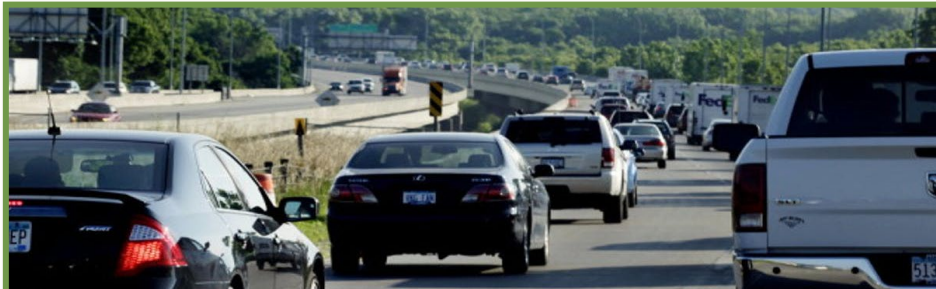
- Congestion Reduction from Lane Enhancements and Reconfiguration

Mobility

- Reduction of Travel Time

Flooding

- Increased Mobility and Efficiency
- Allows for Added Capacity When Local Roads and Closed Due to High Water Levels





PORTS OF SAVAGE

PORTS OF SAVAGE Savage, MN

Project Benefits

Congestion

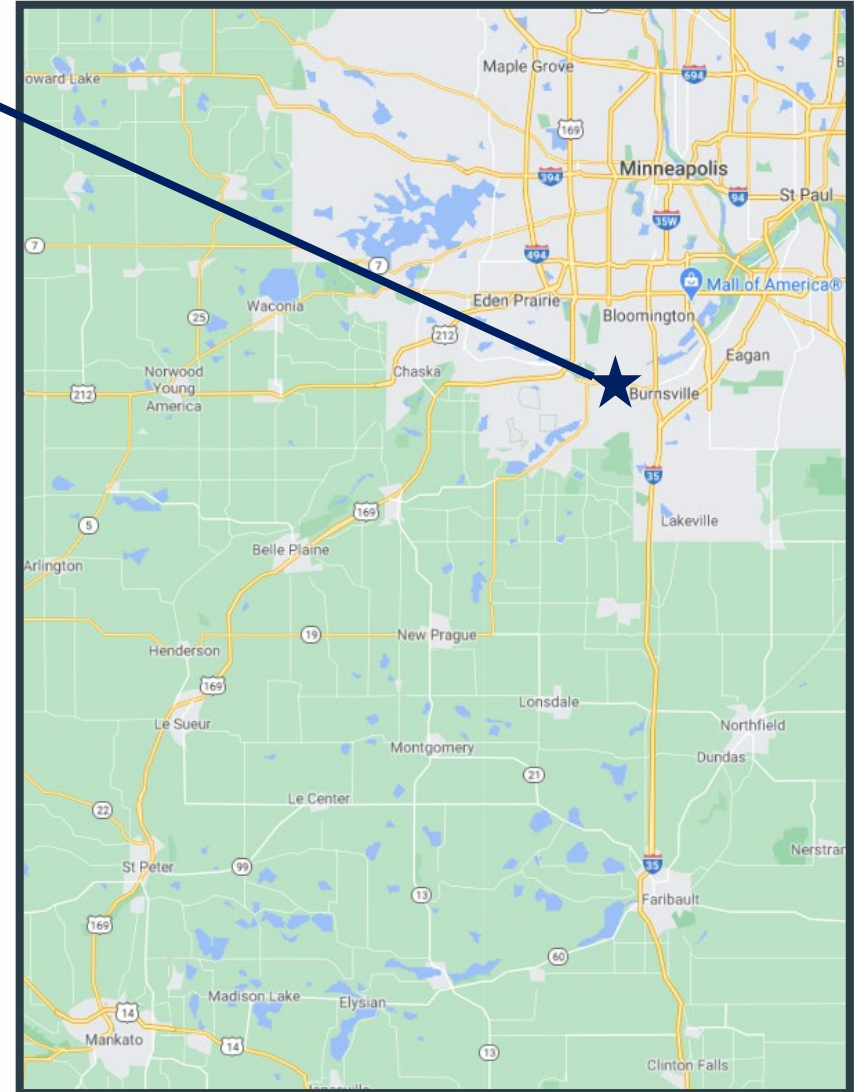
- Hwy 13 Exceeds its Traffic Capacity Resulting in Congestion and Delay

Mobility

- Reduction in Delays by Eliminating Slow Acceleration for Freight Traffic

Safety

- Elimination of Turn Lane Conflict Points
- Added Pedestrian and Bicycle Facilities





PORTS OF SAVAGE

TH 13 and Dakota Avenue Freight Access and Mobily Project

The proposed project will construct a grade separation, additional frontage roads, and accompanying access ramps along Trunk Highway (TH) 13 within the vicinity of Dakota and Yosemite Avenues in the City of Savage.



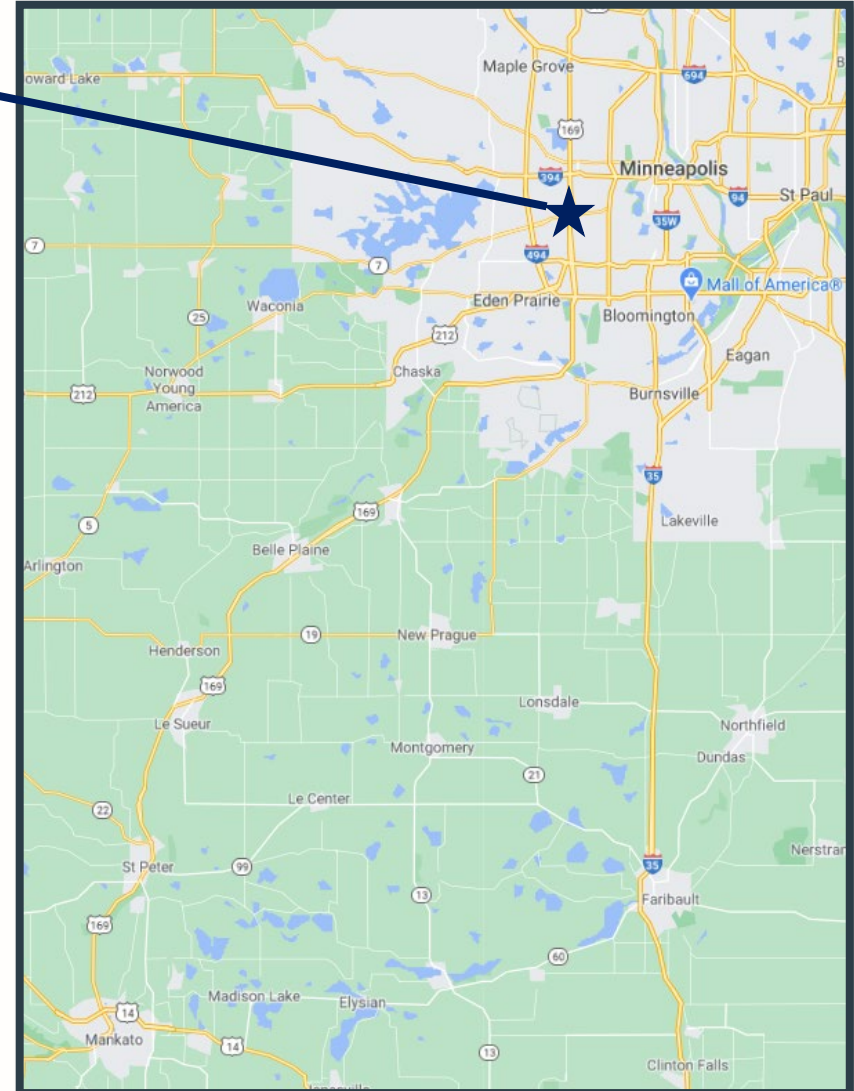


U.S. 169 MOBILITY STUDY

**U.S. 169 Mobility Study Corridor:
Shakopee, MN to Minneapolis, MN**

Project Benefits

Regional transportation plans identified Hwy 169 between Hwy 41 and Hwy 55 as an ideal corridor for transit and mobility improvements. Moreover, statewide plans and community leaders have noted the importance of the Hwy 169 Corridor between Mankato and the Twin Cities as a critical link for educational institutions, businesses, and interregional freight and passenger transportation.





U.S. 169 MOBILITY STUDY

The Study was made up of two tasks:

Task 1 Purpose: Evaluate cost-effective options for improving transit and reducing congestion on Hwy 169 between Hwy 41 in Shakopee and Hwy 55 in Golden Valley.

Task 1 Recommendations

- Highway Bus Rapid Transit (BRT)
- MnPASS Express Lanes
- Lower cost/high benefit improvements along the highway such as adding auxiliary lanes, turn lanes, modifying interchanges and creating ways for buses to get through traffic more efficiently.

Task 2 Purpose: The purpose of the study was to identify potential Highway 169 intercity service travel markets, needs and opportunities and develop intercity bus service options, including short- and long-term recommendations.

Task 2 Recommendations

- Need improved regional connections
- Need expanded travel options
- Need service that is frequent, affordable & connected to other transit services

Action Taken: Implementation of Land to Air intercity bus service from Mankato to Minneapolis

