



TH-41 OVER THE MINNESOTA RIVER

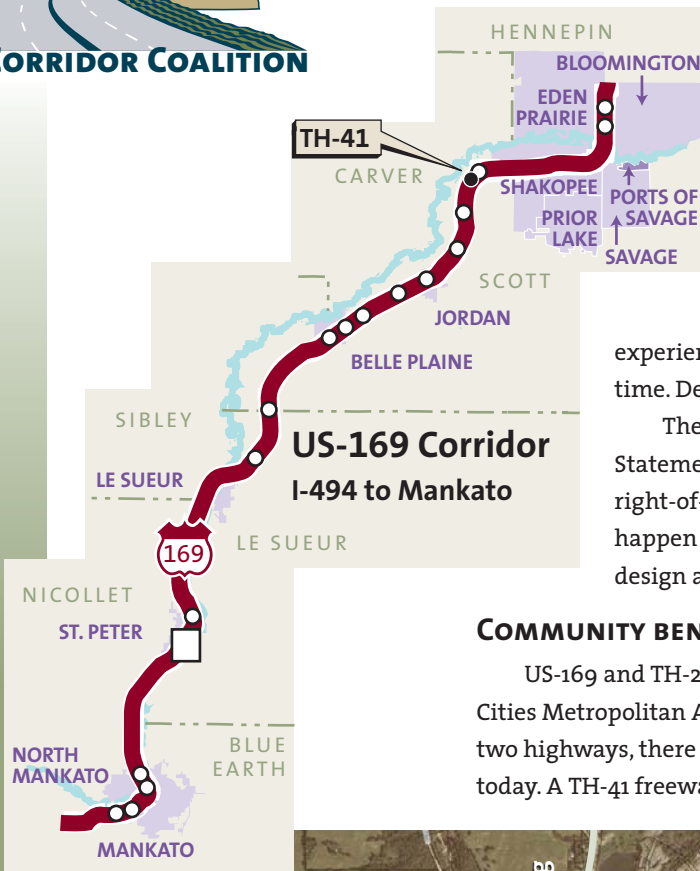
CROSSING NEEDED TO SERVE FUTURE TRAVEL DEMAND

Commuters, residents, businesses and planners have recognized for decades the need for a high-volume, reliable Minnesota River crossing that connects US-169 and TH-212.

The existing TH-41 crossing is one of the most heavily traveled two-lane roads in Minnesota with 18,000 vehicles per day. Traffic volume on TH-41 is projected to increase as the area continues to develop.

The TH-41 and Hwy 101 bridges over the Minnesota River experience frequent floods that can close the river crossing for weeks at a time. Detours to more-elevated bridges can add 20 -40 miles to a trip.

The project is now in a tiered two-step Environmental Impact Statement (EIS) process. The Tier I EIS identifies the corridor for right-of-way preservation to minimize future impacts. The Tier II EIS will happen approximately five years before construction to address detailed design and more specific impacts.



COMMUNITY BENEFITS

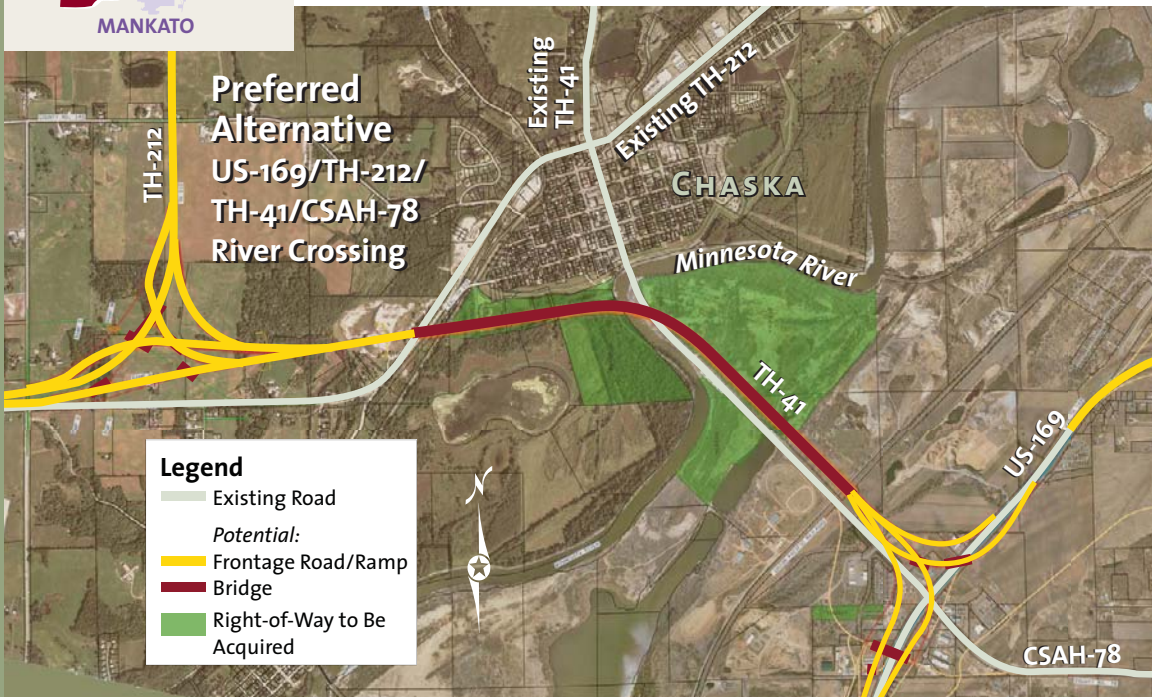
US-169 and TH-212 serve regional traffic in the southwest portion of the Twin Cities Metropolitan Area, as well as connecting with Greater Minnesota. Between the two highways, there is no effective north-south regional highway connection in place today. A TH-41 freeway-to-freeway connection between US-169 and TH-212 would cross

over the Minnesota River and relieve the local and regional traffic congestion, noise, and vibration experienced in downtown Chaska. The quality of life for the area would be enhanced.

FUNDING

Estimated cost: \$500 million.

The project is many years in the future. MnDOT's 20-year fiscally-constrained transportation



plans include right-of-way funding that can be used to acquire property in the corridor from willing sellers. Construction funding is not included in the plan.

QUESTIONS

Diane Langenbach, Project Manager

PH: 651-234-7721, E-mail: diane.langenbach@dot.state.mn.us